

SCOTSMAN®

Modular Air, Water, Remote Cooled Flake Ice Machine

ITEM NO.

FME800

C.S.I. File No. 11400

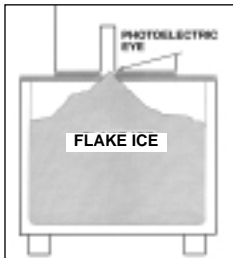


FME800 shown on BH800 bin



FLAKE ICE

Versatile, inexpensive to produce, used in salad bars, produce and fish displays.



PHOTOELECTRIC EYE

For maximum bin storage, photoelectric eye turns machine off when ice level reaches chute.



TOP BEARING

Extra large top bearing attached to auger and breaker reduces bearing wear.

The FME800 represents Scotsman's commitment to R-404A Refrigerant (DuPont SUVA® HP62) as the sensible, permanent solution to the refrigerant issue.

LONG SERVICE LIFE

- Evaporator, auger and breaker are all fabricated from durable stainless steel.
- Innovative "Interrupted Flight" auger design minimizes bearing loads.
- New gearmotor design includes heavy duty ball bearings.
- Large spherical top roller bearing self aligns, reducing bearing wear.

ENHANCED RELIABILITY

- Advanced electronics eliminate mechanical switches and sensors.
- Electronic water level control prevents problems associated with water pressure fluctuations.
- Continuous length evaporator refrigerant tubing eliminates potential refrigerant leaks.

IMPROVED EFFICIENCY

- Photoelectric eye bin control allows maximum storage in bin.
- Continuous icemaking, no hot gas cycle, no water dump.
- Lower KWH usage per 100 lbs. of ice than cubers.

LOWER SERVICE COSTS

- Most major components are accessible from the machine front. Less repair time equals less repair costs.
- Installation made easy by placing all utility connections on back panel, accepting standard plumbing fittings.
- System design minimizes cost of component failure.

VERSATILITY

- Fits a variety of Scotsman Ice Storage Bins – the modular design allows the user to choose the right bin for their needs.

REMOTE CONDENSER

Heat removed during icemaking is carried to the remote condenser directly by refrigerant. There the heat is transferred to the outdoor air, and the refrigerant returns to the icemaker.

- Fan motor operates from icemaker electrical supply.
- Choice of 25 foot or 40 foot precharged refrigerant line with easy to install quick connect couplings.

ENVIRONMENTALLY RESPONSIBLE

- HFC R404a (HP-62) refrigerant.
- Non-CFC and HCFC foam insulation.

WARRANTY PROTECTION

See Dealer for details of Limited Warranty.

- 2 years parts and labor on all components.
- 5 years parts on compressor.
- Directory of Certified Dealer Service.

This product qualifies for the following listings:



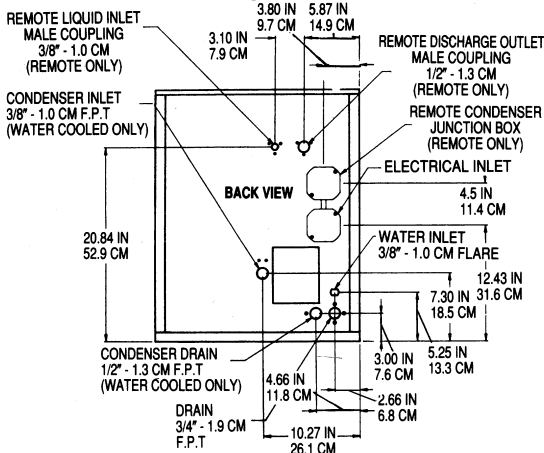
SCOTSMAN®
Ice Systems The World Relies On.™

Consultant/Contractor Approval

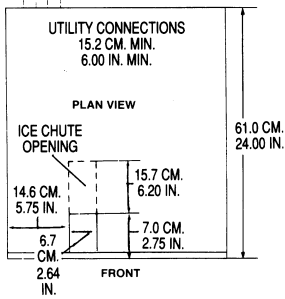
775 CORPORATE WOODS PARKWAY • VERNON HILLS, IL 60061 • (847) 215-4550
FAX (847) 913-9844
E-mail: customer.service@scotsman-ice.com

Printed in U.S.A.
3.5M 2-98

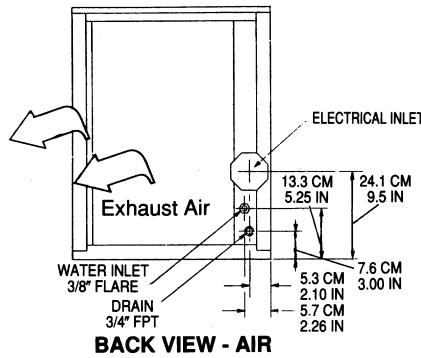
FME800 MODULAR AIR, WATER, REMOTE COOLED FLAKE ICE MACHINE



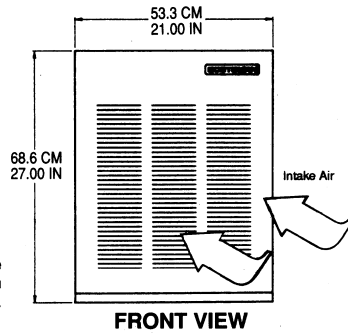
BACK VIEW - WATER & REMOTE



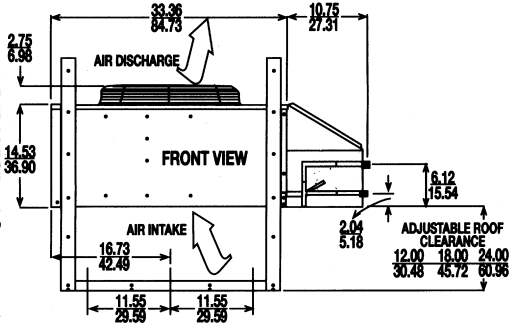
INSTALLATION NOTE:
Allow 6" minimum space at back for ventilation and utility connections.



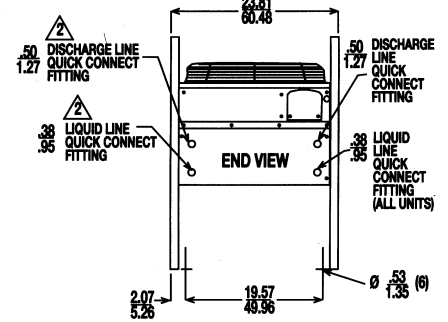
BACK VIEW - AIR



FRONT VIEW



⚠️ DUAL CIRCUIT CONNECTIONS ARE FOR ERC302-32A AND ERC402-32A ONLY



ERC101-1A remote condenser

All models: Dimensions: W x D x H Unit: 21" x 24" x 27" Shipping Carton: 28" x 25" x 32"

Model	Cond. Unit	Ice Prod. Lbs./24 hrs.		Finish	Ship Wt. lbs./kg.	Basic Electrical Volts/Hz/Phase	Comp HP	No. of Wires	Min. Circuit Ampacity	Max. Fuse Size or HACR Circuit Breaker	Power KWH/100 lbs.		Water Usage* Gallons/100 lbs.			
		70° Air	90° Water								90°/70° Potable	70°/50° Condenser	90°/70°	70°/50°		
FME800AE-1A	Air	760	595	EG	205/93	115/60/1	3/4	2	19.5	30	4.9	3.6	12	12	—	—
FME800WE-1A	Water	810	650	EG	200/91	115/60/1	3/4	2	18.3	30	3.8	3.3	12	12	82.3	39.0
FME800RE-1A	R-Air	685	625	EG	220/100	115/60/1	3/4	2	22.5	30	NA	NA	12	12	—	—

REMOTE CONDENSER FOR USE WITH 1 FME800R - Dimensions: W x D x H Unit: 45" x 22.12" x 29.25" Shipping Carton: 46.88" x 21.75" x 22.50"

Model	Cond. Unit	Finish	Ship Wt. lbs./kg.	Basic Electrical Volts/Hz/Phase	Comp HP	No. of Wires	Min. Circuit Ampacity	Max. Fuse Size or HACR Circuit Breaker	Power KWH/100 lbs.	Water Usage* Gallons/100 lbs.
ERC101-1A	Air	Galv.	95/43	115/60/1	—	2	6.0†	15	—	—

* Typical ice production in lbs./kg. of ice per 24 hours at 70° air and 55° water.
 ** EG = enamel grey, leathergrain embossed steel with high gloss baked enamel finish.
 † Use this value to determine minimum wire size as per National Electric Code Standards.
 ‡ This value is included in main ampacity for ice machine.

TYPICAL ICE MAKING CAPACITY PER 24 HOURS

FME800A AIR-COOLED WATER TEMPERATURE

AIR TEMPERATURE	WATER TEMPERATURE				lbs. / kg.
	F° 50° 70° 90°	C° 10° 21° 32°	F° 50° 70° 90°	C° 10° 21° 32°	
70°	760	675	615	520	lbs. / kg.
21°	345	306	279	236	
90°	655	595	520	480	lbs. / kg.
32°	297	270	236	218	
100°	575	510	480	480	lbs. / kg.
38°	261	231	218	218	

FME800W WATER-COOLED WATER TEMPERATURE

AIR TEMPERATURE	WATER TEMPERATURE				lbs. / kg.
	F° 50° 70° 90°	C° 10° 21° 32°	F° 50° 70° 90°	C° 10° 21° 32°	
70°	810	665	590	520	lbs. / kg.
21°	367	302	268	236	
90°	780	650	575	520	lbs. / kg.
32°	354	295	261	236	
100°	720	640	565	520	lbs. / kg.
38°	326	290	256	236	

Capacities represent typical production, variances of ±5% are normal.

FME800 REMOTE COOLED

	AMBIENT TEMPERATURE			ICE PRODUCTION
	COND. AIR	INDOOR	WATER	
LOW TEMPERATURE	F° 0	70	55	685 LBS. / 311 KG.
	C° -17.8	21.1	12.8	
NORMAL TEMPERATURE	F° 90	90	70	625 LBS. / 284 KG.
	C° 32.2	32.2	21.1	
HIGH TEMPERATURE	F° 110	90	80	535 LBS. / 243 KG.
	C° 49.3	32.2	26.7	

IMPORTANT OPERATING REQUIREMENTS:

Machine requires voltage indicated on rating name plate. Failures caused by improper voltage are not considered factory defects.

Scotsman's FME800R is not designed for outdoor installations nor for installation where air temperatures fall below 50° F, or exceed 100° F; nor where water temperatures fall below 40° F, or exceed 100° F. Extended periods of operation at temperatures exceeding these limitations constitutes misuse under the terms of Scotsman Manufacturer's Limited Warranty, resulting in a loss of warranty coverage.

OPTIONAL PRE-CHARGED REFRIGERANT TUBE KITS:

RTE25: 25 foot pre-charged tubing with connectors — R-404A (HP-62).

RTE40: 40 foot pre-charged tubing with connectors — R-404A (HP-62).

OPTIONAL STORAGE BINS: HTB555 or BH550 with KBT14 bin top, BH800 with KBT15 bin top, BH900 with KBT24 bin top (use KBT25 for 2 units side by side on BH900), and B90 and extensions with KBT18 bin top. BH800, BH900 and B90 allow two units side by side.

OPTIONAL STAINLESS STEEL PANEL KIT: SPKFM21: Contains top, front, two end and service panels. Not factory installed.

FM SERIES ICE FLAKER

Model _____ flake icemaker manufactured by Scotsman Ice Systems. Production capacity to be _____ at 90°F air temperature and 70°F water temperature. Icemaker to have a _____ (air, water, remote air)-cooled condenser. To have factory installed photo-electric eye bin level control to automatically start and stop icemaker. Evaporator and auger to be constructed of stainless steel. Exterior cabinet to be _____ (baked enamel grey leathergrain or 304 series stainless steel) finish. Icemaker to be UL, CSA, NSF and USDA listed.

Continuing improvements to our products may necessitate changes without notice. Scotsman ice systems include a full line of ice shapes, modular and self-storing cubers, flakers, drink dispensers, bins and accessories.

